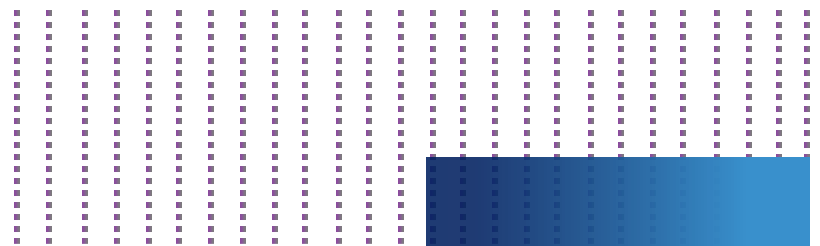




# Transform Business. Drive Insightful Customer Experience



# About Us



US and UK based tech team with a laser sharp focus on driving Intelligent Frictionless Customer Experience



Centre-of-Excellence in Full-stack JavaScript + Cloud



Rich experience in Technology Consulting, Architecture Blueprinting and Digital Transformation



## Geographic Span

Americas | UK | Africa | India



## Boutique Skills

20+ team members from CoE pool



## Portfolio Industries

BFSI | Retail | Logistics  
| Healthcare | Social



## Agile Project Experience

Avg sprints – 6 | Max sprints – 22 |

# App Modernization Services



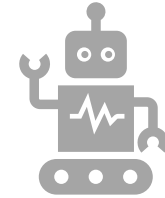
Discovery and  
Workload Assessment  
(Sizing and Pricing)



Design & Architecture  
Blueprint



Transformation using  
Tools & Accelerators



Continuous Integration  
and Automation

- Mobile / Web / Devices / Cloud / Serverless / API / Microservices
- Jump start reference architecture framework from Centre of Excellence
- Accelerators and Tools for Code Generation - Improved Quality at Reduced Cost
- Automated Infrastructure Provisioning, Continuous Integration and Deployment

# Jump Start Framework – App Modernization



Media streaming integration for videos using cloud technology stack



Native video / audio integration



Complex Image capture, editing, cropping and stitching functions



Multiple products & images loading with performance optimization



Facebook and Google Ads Integration for Revenue



Multi-lingual supporting 20 international languages



In-App product purchase and subscription integration



In-App payment integration - one time and recurring



Auth0 Integration / Universal / Single-Sign-On



RFID Integration



Social Login Integration – FB and G+



Google Maps Integration



True Caller integration



Firebase integration for notification and Crashlytics



QR and Barcode generation



Payment gateway including wallets integration



Multiple 3rd party integration for Identity verification based on ID Proofs



AWS and Azure - Serverless APIs



Offline mobile application capability



Complex encryption / decryption functions



React Native Material and Native base UI designs



Customized mobile push notification with admin console & filters



Share option using WhatsApp, Email, SMS, Facebook and Twitter etc.



Custom Dashboard Controls



Geo Location based Services



Multi Factor Authentication



Intelligent Chatbot Integration

✓ These Frameworks has Proven 20% More Productivity with 30% Less Effort

# Jump Start Framework – Cloud Modernization



Workload assessment for  
Cloud Migration



Cloud IT Landscape Design  
and Implementation



Virtual Machines  
provisioning for Dev/Test,  
QA, Staging and Production



Build a Pilot Infrastructure /  
POC



Data Migration to Cloud  
Storage



Backup solution on the  
cloud using Commvault,  
Veritas



VPN / Express Route  
solution for on-prem  
cloud connectivity



High Availability Solution  
Design and Setup



Disaster Recovery Solution  
Design and Setup



Setup Monitoring and  
Alerts against budget  
limits



Application Migration /  
Hybrid Migration strategy



Cloud Adoption Training  
(Mission Critical workload  
On Azure)



Automated Virtual Lab  
Provisioning for Corporate  
Training



✓ These Frameworks  
has Proven  
40% More  
Productivity with  
40% Less Effort

# ENGAGEMENT MODEL



## Full Time Engagement (FTE)

- Client owns delivery
- **Time and Material pricing model**
- Offshore engagement

### Benefits

- Leverage knowledge and skills on demand

### Challenges

- Our COE Support is limited
- Adjacent skills of any project will need new resources
- Delivery to be owned by onsite client management

## Dedicated Resource

- Client owns delivery
- **Capped Time and Material pricing model**
- Offshore engagement

### Benefits

- Controlled cost helps business to release capital for investment
- Our COE Support

### Challenges

- Delivery to be owned by onsite client management

## Managed Product

- We Own Delivery
- Client Owns Product
- **Fixed Monthly pricing model**

### Benefits

- Delivery owned by service provider .

### Challenges

- Doesn't work in a business with < 3 months duration

## Client Partner

- We Own Delivery / Product
- Client Monitors
- **Consulting Led Engagement pricing model**

### Benefits

- Free up business to focus on its core business activities

### Challenges

- Ideation and journey map in the beginning
- Doesn't work in a business with < 6 months duration

# Select Case Studies



Africa's First Payment Gateway Aggregator project for Money Transfer and Utility Payments on GCP App Engine



Innovation using tagging to provide ultimate protection against losing your mobile phone on Azure App Services



Largest Mobile store for a premium hardware merchant using Azure Cognitive, Redis Caching and Notification Services



Mobile App for Investing and Equity crowdfunding using Global ID Validation for the Digital Economy on AWS Amplify



Highly Secure Short films Mobile App over-the-top streaming using Azure Media Services, CDN & Auth0



CRM Solution for Accounting Outsourcing firm using Azure App, Data Factory and PowerBI Services

# Select Case Studies



Agent Dashboard Solution for a Call Center provider using AWS Amplify and Periscope



Mobile App to manage Low-Bandwidth Loan Origination to Collection for BFSI sector on Azure Serverless Architecture



Adobe Experience Manager

Display Solutions for a Leading Cruise Liner using Adobe Experience Manager, Ocean View and Exterity



Azure ML

AI Driven Customer - Vendor Reconciliation and Payment Clearance Solution for a leading Insurance Broker using Azure ML



Identity Management using Face Recognition for an online marketplace homestay provider, using Azure Cognitive Vision



SAP on Azure Workload Migration harnessing HANA's ML Capabilities with Google TensorFlow Integration



# Technology Stack



React / React  
Native



Angular



Vue

express

Express



Flutter



Python



Node JS



Sketch



Firebase



DynamoDB



Mongo



MySQL



MS-SQL



MariaDB



Azure



AWS



GCP



Jenkins



kubernetes



docker



**HYPERLEDGER  
FABRIC**

Need solid assistance and advice  
with your IT projects?



Educating Rural India



FUNDOPOLIS

